

## HIV/AIDS in Israel: Periodic Epidemiological Report 1981-2021 Revised

The current report presents data that has been updated and classified according to the guidelines of the World Health Organization (WHO) and the United Nations AIDS Service (UNAIDS). The database is based on individual notification and is routinely updated by cross-referencing the data in the health bureaus, HIV clinics, the Central Virology Laboratory, the National Center for Disease Control (ICDC) and Health Maintenance Organizations.

From 1981 until the end of 2021, the Ministry of Health was notified concerning 11,146 cases of HIV/AIDS in Israel (1,815 of which progressed to AIDS). Accounting for 1,785 fatalities and 1,048 individuals who are confirmed or assumed to have left Israel, 8,313 people living with HIV/AIDS (PLHIV) are currently registered in Israel (Tables 1-2, Figure 1).

In 2021, 388 new cases were reported compared to 362 in 2020, an increase of 7%, while the HIV incidence increased from 3.9 to 4.1 cases per 100,000 (based on population data at the end of 2021 from the Israel Government Advertising Bureau [Figure 2]). This rate is lower than that reported in most Western European and North American countries. However, there are large disparities between different subpopulations in the country. Additional data about the epidemiology of HIV in Israel can be found in figures 3-5 below.

Israeli citizens, including new immigrants, are universally entitled to health insurance, however asylum seekers and foreign citizens living in Israel are not. In order to address the needs of migrant communities as they pertain to HIV, the Israeli Ministry of Health adopted a [program in 2016 that extends HIV care to all migrants living in Israel without health insurance](#), regardless of country of origin. Eligibility for this program is limited to migrants who have resided in Israel for at least six months.

### Notes:

1. For the 2021 reporting year, there is a difference between the number of new cases reported in the interim report of the Central Virology Laboratory (published in July 2022), and in the current report. This difference (4 cases) is due to cases reported to the Ministry of Health in previous years.
2. A previous version of this report published on 01.12.22 contained incorrect data which have been corrected and this version should be seen as authoritative.

**Table 1: Cumulative number of people living with HIV, by sex and mode of transmission, Israel 1981 – 2021**

Transmission category	Male	Female	Trans	Unknown sex	Total	Total deaths	Total who left Israel	Cases reported in 2021
MSM	2,629		8		2,637	93	132	141
PWID	830	217		9	1,056	235	76	10
Blood Recipients	47	6			53	23	1	
OGE	1,307	1,549		16	2,872	226	313	70
Heterosexuals with HIV+ partners from categories above	107	280			387	25	17	15
Heterosexuals with partners not known as members of categories above	635	660		10	1,305	73	126	79
Mother-to-child	110	127			237	1	5	9
Other/undetermined	453	261		70	784	32	295	43
<b>Total</b>	<b>6,118</b>	<b>3,100</b>	<b>8</b>	<b>105</b>	<b>9,331</b>	<b>708</b>	<b>965</b>	<b>367</b>

\* The number does not include people living with AIDS.

*Abbreviations used in the report:*

PLHIV- People living with HIV; MSM- Men who have Sex with Men; PWID- People who use injection drugs; OGE- Originated from Country with Generalized HIV Epidemic

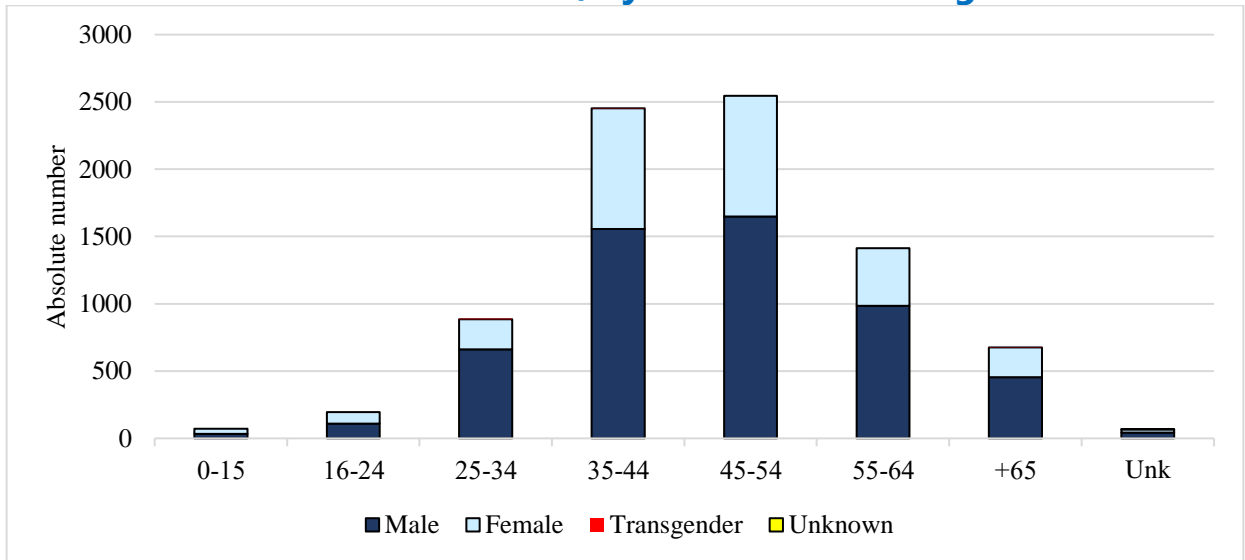


**Table 2: Cumulative number of people living with AIDS, by sex and mode of transmission, Israel, 1981-2021**

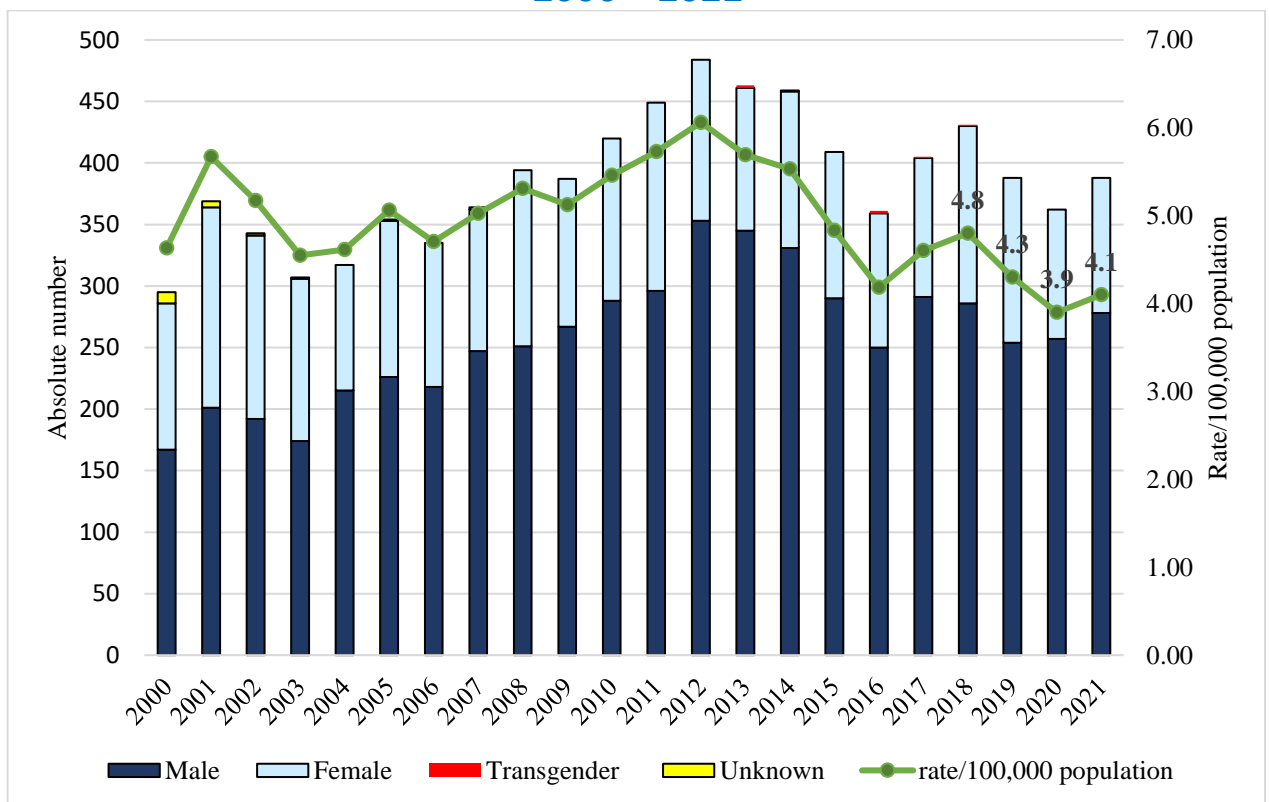
Transmission category	Male	Female	Total	Total deaths	Total who left Israel	Cases reported in 2021
MSM	344		344	224	12	3
PWID	238	52	290	198	8	2
Blood Recipients	49	9	58	55		
OGE	444	304	748	400	49	8
Heterosexuals with HIV+ partners from categories above	18	46	64	41		
Heterosexuals with partners not known as members of categories above	141	72	213	86	9	7
Mother-to-child	18	22	40	21	1	
Other/ undetermined	51	7	58	52	4	1
<b>Total</b>	<b>1,303</b>	<b>512</b>	<b>1,815</b>	<b>1,077</b>	<b>83</b>	<b>21</b>

\*The number does not include people living with HIV.

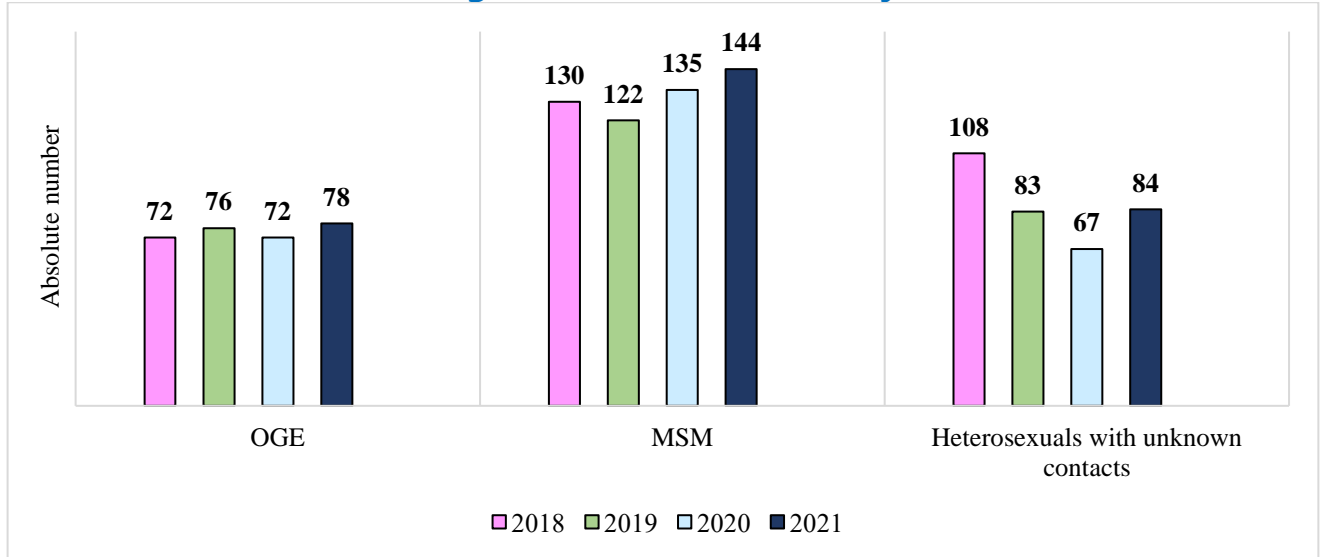
**Figure 1: Cumulative number of people living with HIV and AIDS in Israel at the end of 2021, by sex and current age**



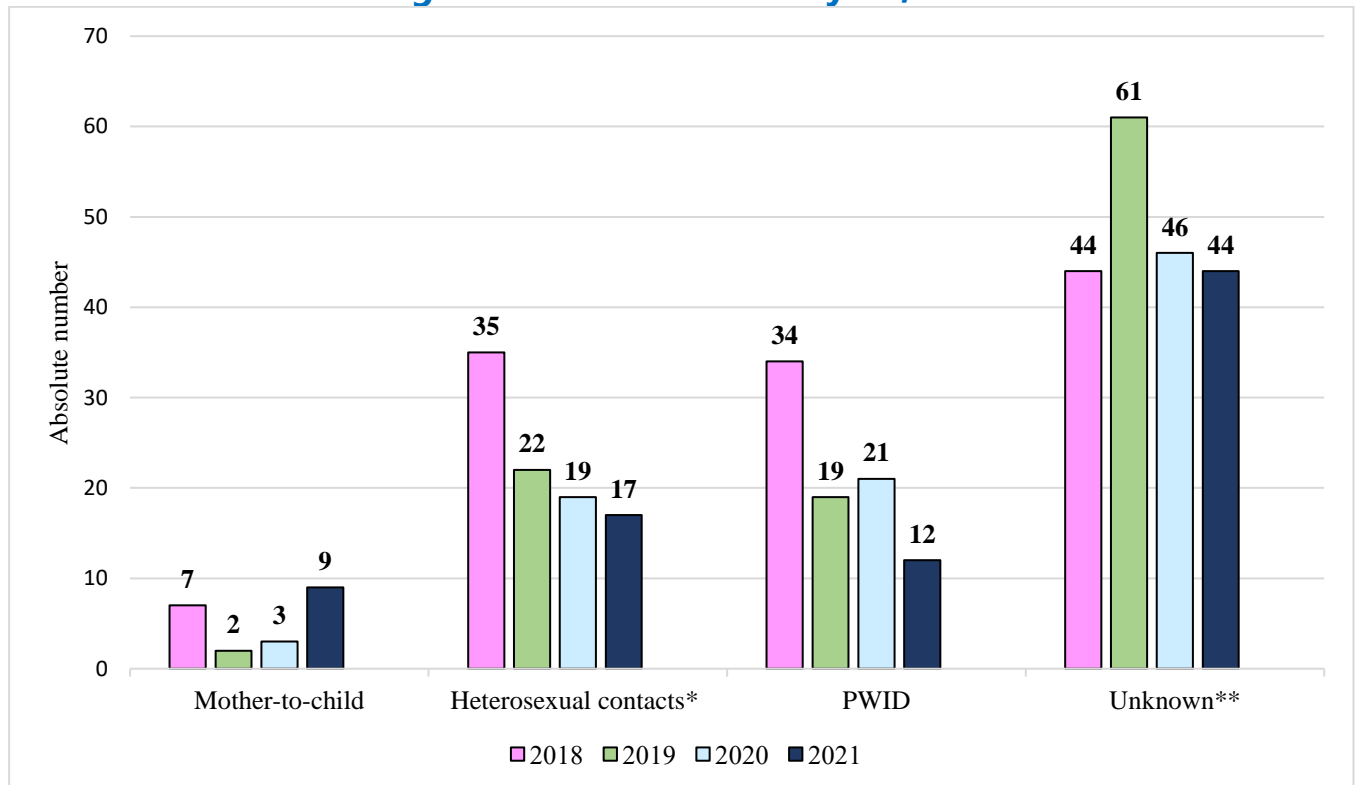
**Figure 2: People living with HIV and AIDS, by gender and notification year, including annual incidence rates per 100,000 population, Israel 2000 – 2021**



**Figure 3: Reported newly diagnosed people living with HIV and AIDS by main transmission categories and notification year, Israel 2018-2021**



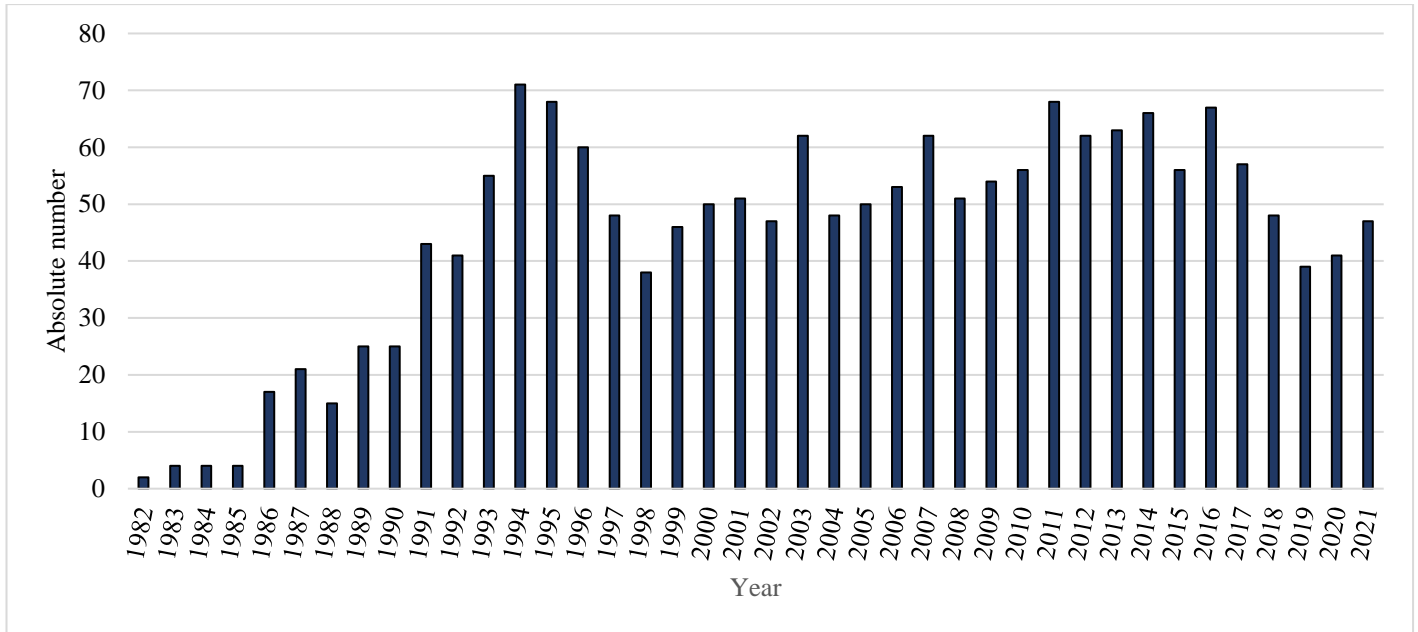
**Figure 4: Reported newly diagnosed people living with HIV and AIDS by transmission categories and notification year, Israel 2018 – 2021**



\* Heterosexual whose partners are MSM, PWID, OGE, hemophiliac or other blood recipients.

\*\* The majority of these cases are non-Israeli citizens.

**Figure 5: All-cause mortality among people living with HIV and AIDS, by year of death, Israel 1982 – 2021**



Figures are subject to minor changes following updates to the national HIV registry.

Editor: Dr. Daniel Chemtob, MD, MPH, DEA

Revision: Dr. Yaakov Dickstein, Prof. Zohar Mor

Acknowledgements: Ms. Zehavit Weixelbom, Ms. Tali Wagner

Jerusalem, December 2022.

Revision: Jerusalem, June 2024.